

river trees

R E S I D E N C E S

F L O O R P L A N S

THE HOME TRAVELLER: IN, OUT AND ABOUT

— FEATURING —

EXPERIENCE WATERFRONT LIVING

WAKE UP TO A MILLION DOLLAR VIEW EVERY DAY

NORTH COAST INNOVATION CORRIDOR - WHAT EVERY INVESTOR SHOULD KNOW



FRONTAGE ON RESERVOIR
A commanding view of the reservoir
and lush green banks.

Reservoir vantage

No other home is closer than RiverTrees Residences with an incomparable reservoir frontage. With clearly the best view along the reservoir, the best moments in life are naturally yours. Some people spend a lifetime searching for this magical moment. For you, it's right outside your home.

INTO THE TOWN From top: convenience is a 3 minutes walk to Layar LRT station via future park connector, which connects quickly to Sengkang MRT station on the North-East Line; future Watertown, Waterway Point is just 5 minutes away by car; North Coast Innovation Corridor is the upcoming economic cluster for new technologies and innovation; Nan Chiau Primary School is a 3 minutes drive away; upcoming Seletar Mall features Shaw Theatres with 8-screen multiplex cinema, NTUC Foodfare food court and NTUC FairPrice Finest; Greenwich V is a charming village-like retail mall with a vibrant blend of stores.

Right track



Layar LRT station



Artists' Impression
Watertown, Waterway Point



North Coast Innovation Corridor



Nan Chiau Primary School



Artists' Impression
Seletar Mall



Greenwich V



- 15 mins drive to Orchard Road / MBS (CTE)
- 8 mins walk to Seletar Mall
- 5 mins drive to Seletar Aerospace Park
- 3 mins drive to Jalan Kayu / Greenwich V
- rivertrees RESIDENCES**
- 2 mins drive to Sengkang Sports & Recreation Centre
- 3 mins walk to Layar LRT via future park connector
- 3 mins drive to Compass Point / Sengkang MRT
- 5 mins drive to Punggol MRT / Watertown, Waterway Point
- 16 mins drive to Changi Airport (TPE)

Unit Distribution

FLOOR PLANS

Tower 23

Unit Storey	7	8	9	10
20	C(a)	C2(a)	B3(a)	C2(a)
19	C	C2	B3	C2
18	C	C2	B3	C2
17	C	C2	B3	C2
16	C	C2	B3	C2
15	C	C2	B3	C2
14	C	C2	B3	C2
13	C	C2	B3	C2
12	C	C2	B3	C2
11	C	C2	B3	C2
10	C	C2	B3	C2
9	C	C2	B3	C2
8	C	C2	B3	C2
7	C	C2	B3	C2
6	C	C2	B3	C2
5	C	C2	B3	C2
4	C	C2	B3	C2
3	C	C2	B3	C2
2	C	C2p	B3p	C2p
1	Cp		SH	

Tower 25

Unit Storey	11	12	13	14
20	B1(a)	D(a)	B3(a)	D(a)
19	B1	D	B3	D
18	B1	D	B3	D
17	B1	D	B3	D
16	B1	D	B3	D
15	B1	D	B3	D
14	B1	D	B3	D
13	B1	D	B3	D
12	B1	D	B3	D
11	B1	D	B3	D
10	B1	D	B3	D
9	B1	D	B3	D
8	B1	D	B3	D
7	B1	D	B3	D
6	B1	D	B3	D
5	B1	D	B3	D
4	B1	D	B3	D
3	B1	D	B3	D
2		Dp	B3p	Dp
1				

Tower 27

Unit Storey	15	16	17	18
20	C2(a)	B3(a)	C2(a)	B1(a)
19	C2	B3	C2	B1
18	C2	B3	C2	B1
17	C2	B3	C2	B1
16	C2	B3	C2	B1
15	C2	B3	C2	B1
14	C2	B3	C2	B1
13	C2	B3	C2	B1
12	C2	B3	C2	B1
11	C2	B3	C2	B1
10	C2	B3	C2	B1
9	C2	B3	C2	B1
8	C2	B3	C2	B1
7	C2	B3	C2	B1
6	C2	B3	C2	B1
5	C2	B3	C2	B1
4	C2	B3	C2	B1
3	C2	B3	C2	B1
2	C2p	B3p	C2p	B1
1				B1p

Tower 21

Unit Storey	1	2	3	4	5	6
22	D2(a)	B5(a)	C2(a)	B(a)	A(a)	D2(a)
21	D2	B5	C2	B	A	D2
20	D2	B5	C2	B	A	D2
19	D2	B5	C2	B	A	D2
18	D2	B5	C2	B	A	D2
17	D2	B5	C2	B	A	D2
16	D2	B5	C2	B	A	D2
15	D2	B5	C2	B	A	D2
14	D2	B5	C2	B	A	D2
13	D2	B5	C2	B	A	D2
12	D2	B5	C2	B	A	D2
11	D2	B5	C2	B	A	D2
10	D2	B5	C2	B	A	D2
9	D2	B5	C2	B	A	D2
8	D2	B5	C2	B	A	D2
7	D2	B5	C2	B	A	D2
6	D2	B5	C2	B	A	D2
5	D2	B5	C2	B	A	D2
4	D2	B5	C2	B	A	D2
3	D2	B5	C2	B	A	D2
2	D2p	B5p	C2p	B	A	D2
1				Bp	Ap	D2p1

Tower 29

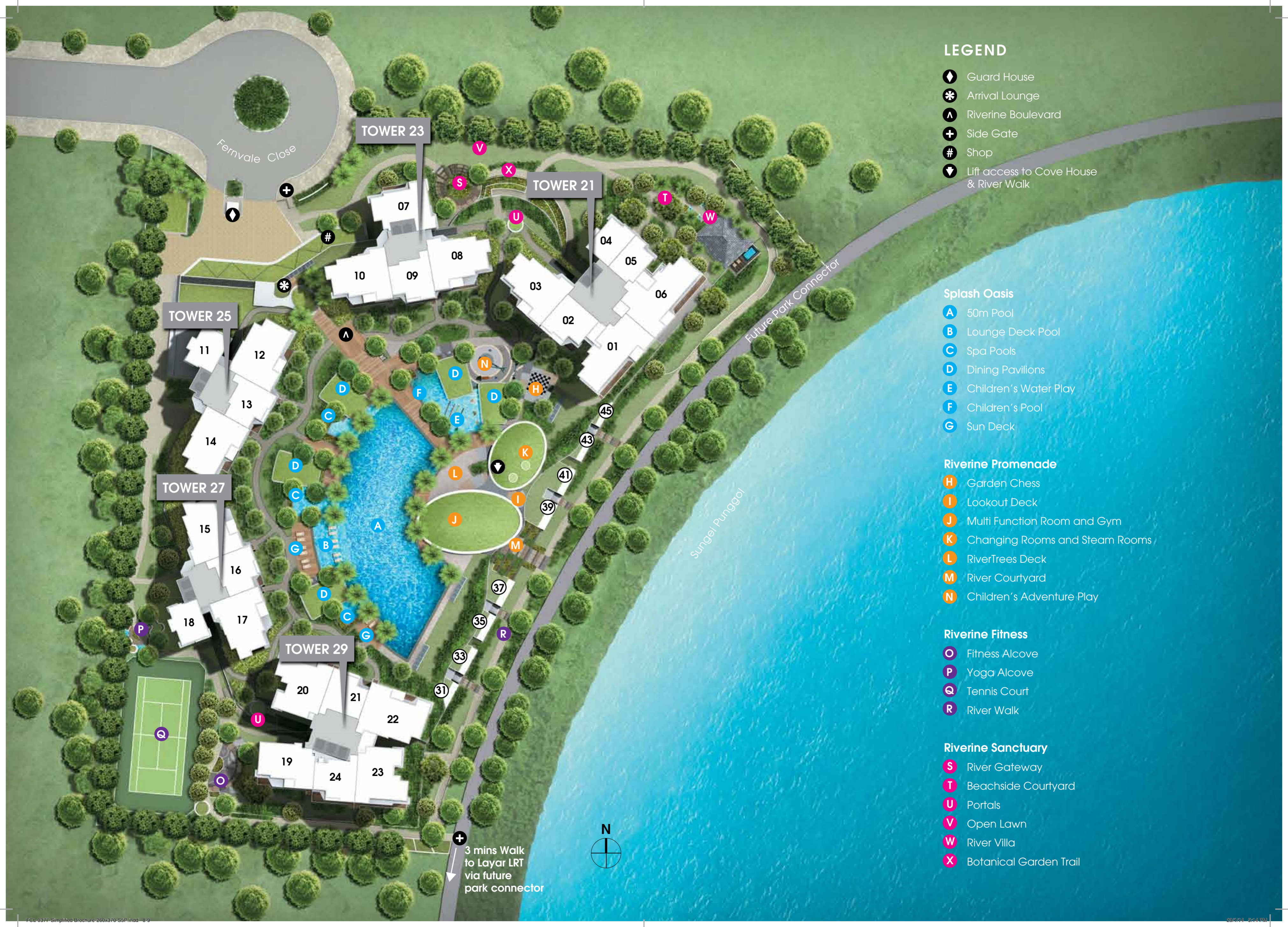
Unit Storey	19	20	21	22	23	24
22	C1(a)	C TR(a)	B4(a)	D1(a)	C TR(a)	B2(a)
21	C1	C TR	B4	D1	C TR	B2
20	C1	C TR	B4	D1	C TR	B2
19	C1	C TR	B4	D1	C TR	B2
18	C1	C TR	B4	D1	C TR	B2
17	C1	C TR	B4	D1	C TR	B2
16	C1	C TR	B4	D1	C TR	B2
15	C1	C TR	B4	D1	C TR	B2
14	C1	C TR	B4	D1	C TR	B2
13	C1	C TR	B4	D1	C TR	B2
12	C1	C TR	B4	D1	C TR	B2
11	C1	C TR	B4	D1	C TR	B2
10	C1	C TR	B4	D1	C TR	B2
9	C1	C TR	B4	D1	C TR	B2
8	C1	C TR	B4	D1	C TR	B2
7	C1	C TR	B4	D1	C TR	B2
6	C1	C TR	B4	D1	C TR	B2
5	C1	C TR	B4	D1	C TR	B2
4	C1	C TR	B4	D1	C TR	B2
3	C1	C TR	B4	D1	C TR	B2
2	C1	C TRp	B4p	D1p	C TR	B2
1	C1p				C TRp	B2p

Fernvale Close

31	33	35	37	39	41	43	45
CH(a)	CH	CH	CH(a)	CH(a)	CH	CH	CH(a)

Legend

- COVE HOUSE
- 1 Bedroom
- 2 Bedroom
- 3 Bedroom
- 4 Bedroom



LEGEND

- Guard House
- Arrival Lounge
- Riverine Boulevard
- Side Gate
- Shop
- Lift access to Cove House & River Walk

Splash Oasis

- 50m Pool
- Lounge Deck Pool
- Spa Pools
- Dining Pavilions
- Children's Water Play
- Children's Pool
- Sun Deck

Riverine Promenade

- Garden Chess
- Lookout Deck
- Multi Function Room and Gym
- Changing Rooms and Steam Rooms
- RiverTrees Deck
- River Courtyard
- Children's Adventure Play

Riverine Fitness

- Fitness Alcove
- Yoga Alcove
- Tennis Court
- River Walk

Riverine Sanctuary

- River Gateway
- Beachside Courtyard
- Portals
- Open Lawn
- River Villa
- Botanical Garden Trail

Fernvale Close

TOWER 23

TOWER 21

TOWER 25

TOWER 27

TOWER 29

Future Park Connector

Sungai Punggal

3 mins Walk to Layar LRT via future park connector



COVE HOUSE

*Exclusive landed living
by the Reservoir
Eight Cove Houses*

TYPE CH – Hse 33, Hse 35*, Hse 41, Hse 43*

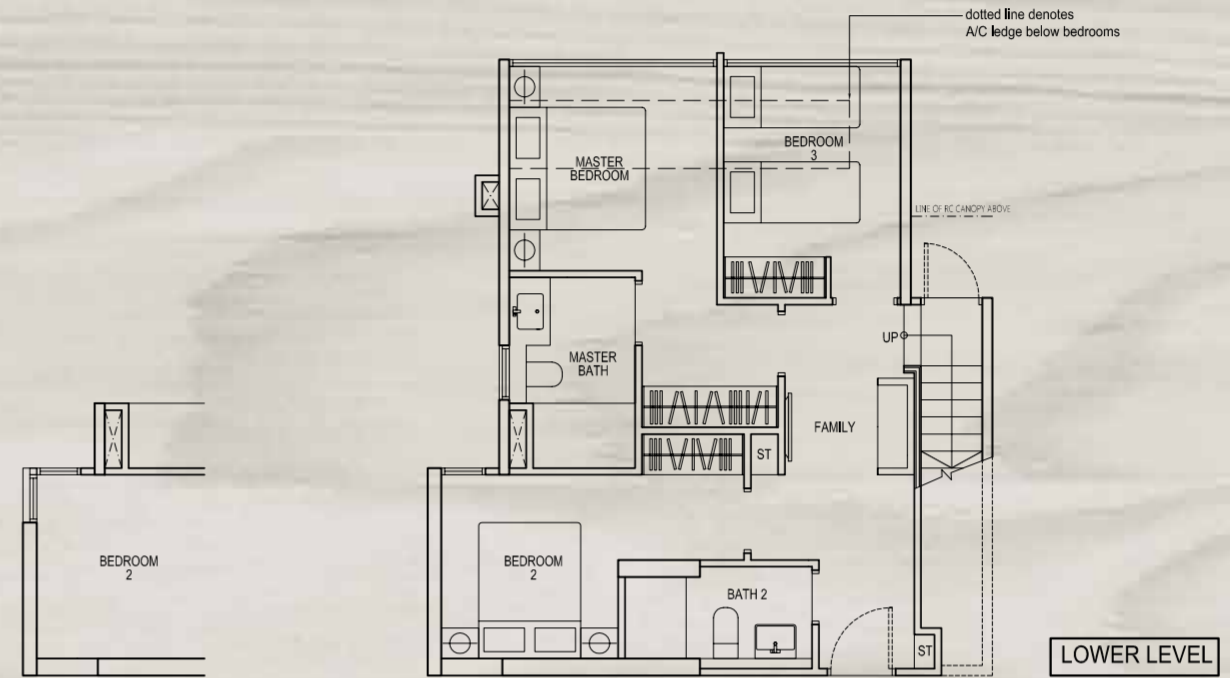
TYPE CH(a) – Hse 31*, Hse 37, Hse 39*, Hse 45

142sqm/1528sqft

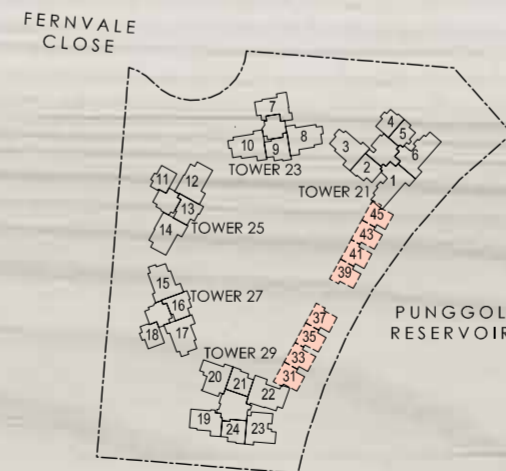
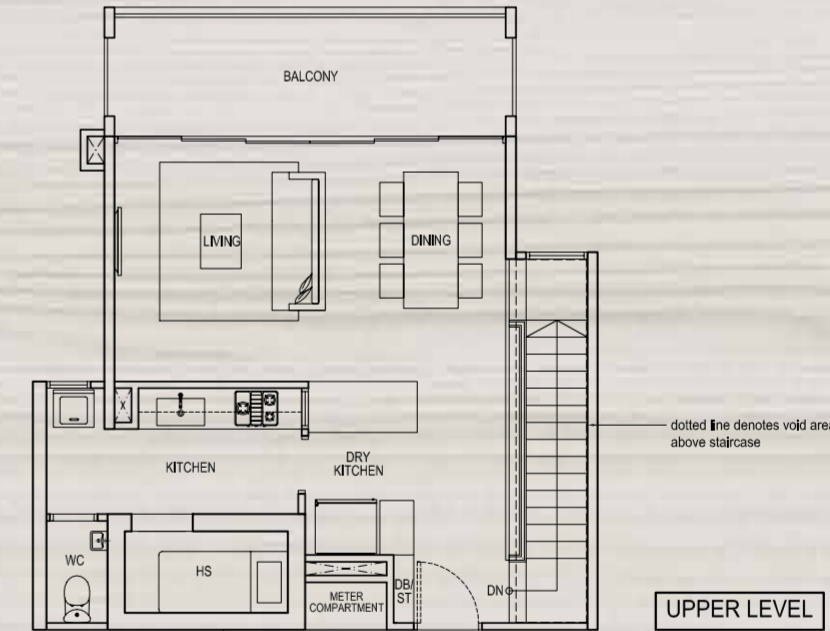
Inclusive of void area of 7 sqm above above staircase and private carpark lot of 12 sqm



Imagine stepping out of your home to an invigorating jog along the reservoir. This is as close as you will get to serenity when you own a breathtaking frontal view of nature's best. And this privilege is only extended to 8 rare Cove Houses by the reservoir - a new concept in luxurious waterfront living.

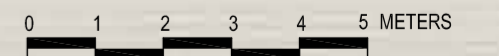


APPLICABLE TO TYPE CH(a)



KEY PLAN

*Mirror image



Area includes A/C ledge, balcony, PES and void area. Some units are mirror images of the apartment plans shown in the brochure. Please refer to the key plans for orientation. The plans are subjected to change as may be approved by relevant authorities. All floor plans are approximate measurements only and are subjected to government resurvey. Abbreviation: A/C ledge (Aircon Ledge), PES (Private Enclosed Space), ST (Store), DB (Distribution Board).

EXTRAORDINARY VIEW

WITH AN EXTRAORDINARY DIFFERENCE

*Exclusive Apartment Designs
for Waterfront Living*

SUITES


VANTAGE HOMES

VISTA HOMES

VERANDAH HOMES

TRIO

PRIVE



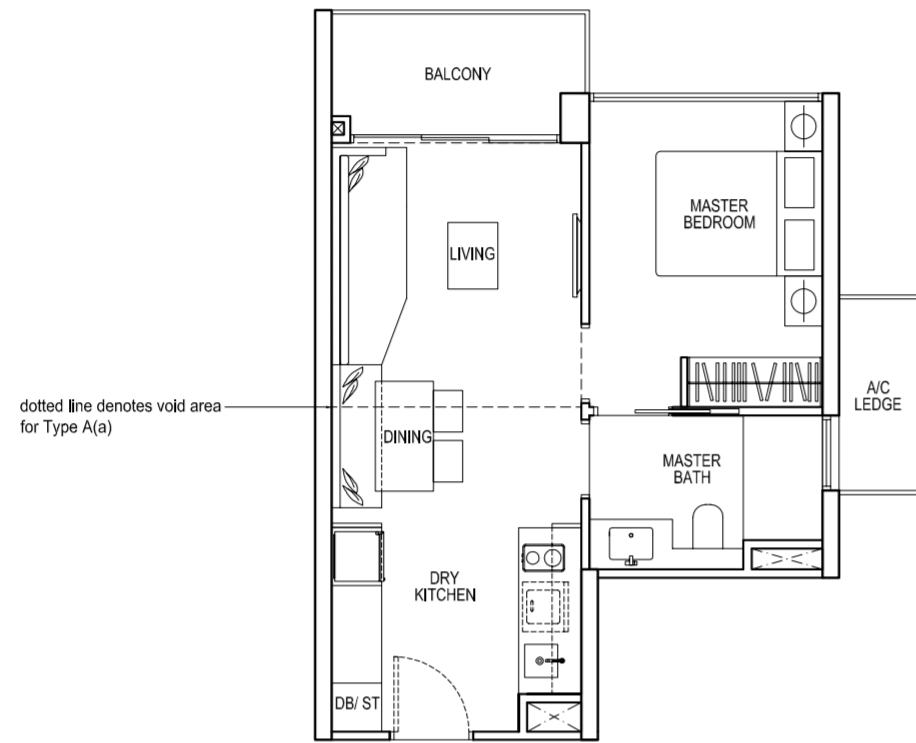
In the luxurious comforts of your extraordinary abode, enjoy your special view of a gleaming reservoir, awash with enchanting blooms and occasional glimpses of native river birds.

TYPE A

1 Bedroom
47sqm/506sqft
#02-05 to #21-05

TYPE A(a)

1 Bedroom
57sqm/614sqft
#22-05
Inclusive of void area
of 10 sqm above living

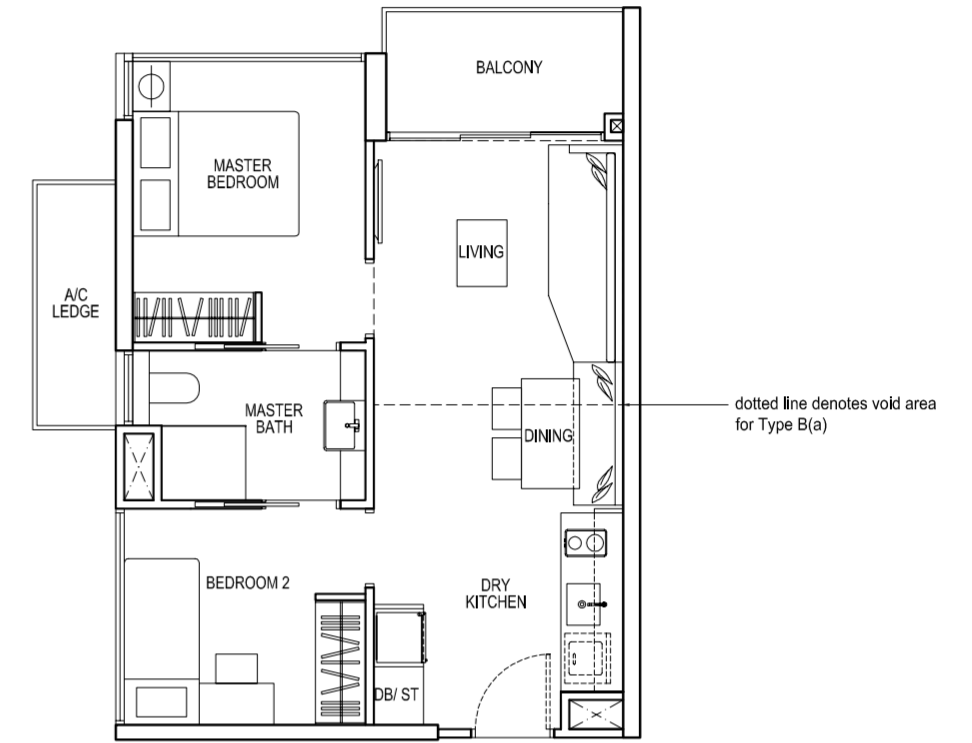
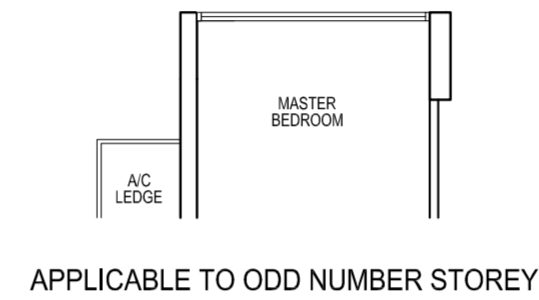


TYPE B

2 Bedroom
54sqm/581sqft
#02-04 to #21-04

TYPE B(a)

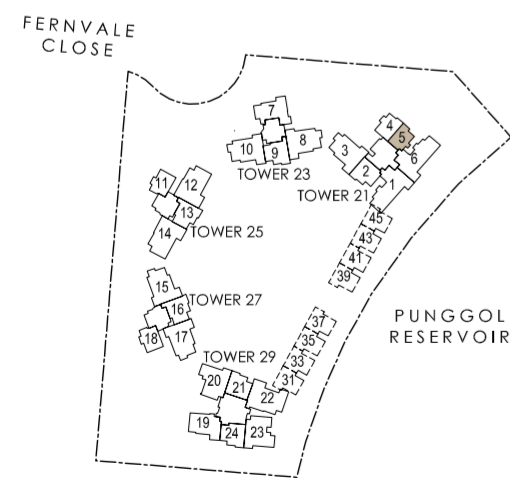
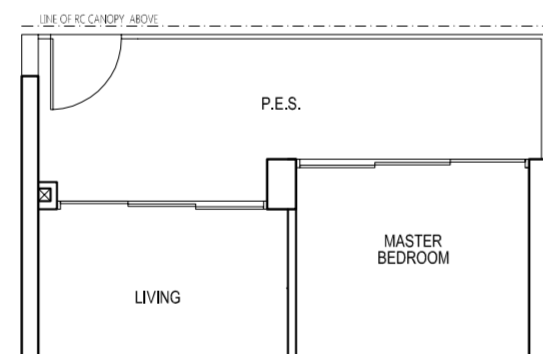
2 Bedroom
64sqm/689sqft
#22-04
Inclusive of void area
of 10 sqm above living



TYPE Ap

1 Bedroom
53sqm/570sqft
#01-05

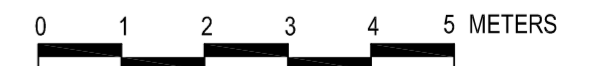
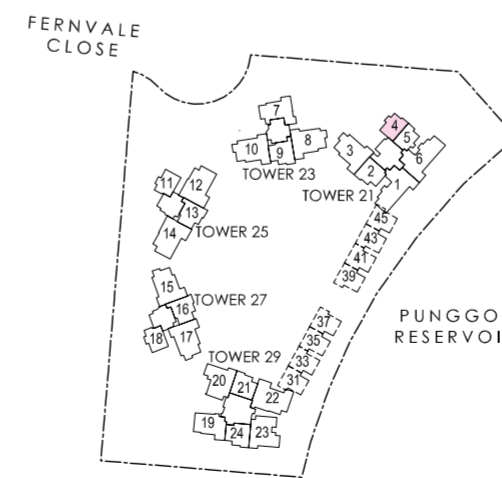
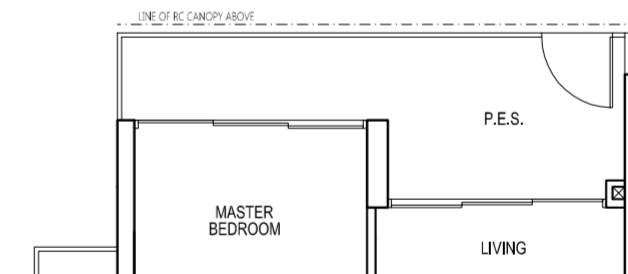
HIGH CEILING



TYPE Bp

2 Bedroom
59sqm/635sqft
#01-04

HIGH CEILING



Area includes A/C ledge, balcony, PES and void area. Some units are mirror images of the apartment plans shown in the brochure. Please refer to the key plans for orientation. The plans are subjected to change as may be approved by relevant authorities. All floor plans are approximate measurements only and are subjected to government resurvey. Abbreviation: A/C ledge (Aircon Ledge), PES (Private Enclosed Space), ST (Store), DB (Distribution Board).

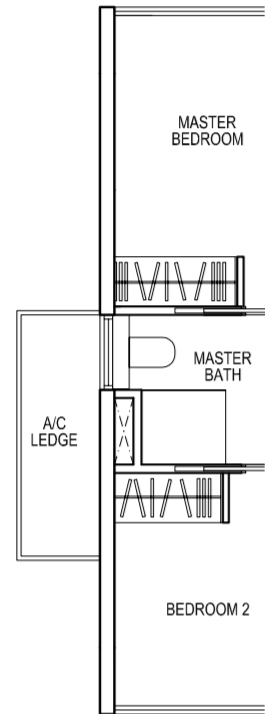
Area includes A/C ledge, balcony, PES and void area. Some units are mirror images of the apartment plans shown in the brochure. Please refer to the key plans for orientation. The plans are subjected to change as may be approved by relevant authorities. All floor plans are approximate measurements only and are subjected to government resurvey. Abbreviation: A/C ledge (Aircon Ledge), PES (Private Enclosed Space), ST (Store), DB (Distribution Board).

TYPE B1

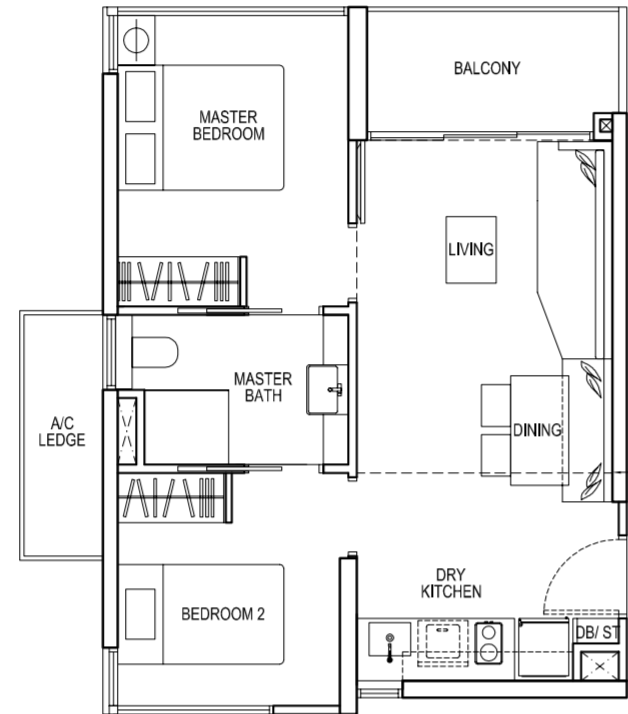
2 Bedroom
54sqm/581sqft
#03-11 to #19-11
#02-18* to #19-18*

TYPE B1(a)

2 Bedroom
67sqm/721sqft
#20-11
#20-18*
Inclusive of void area
of 13 sqm above living



APPLICABLE TO ODD NUMBER STOREY



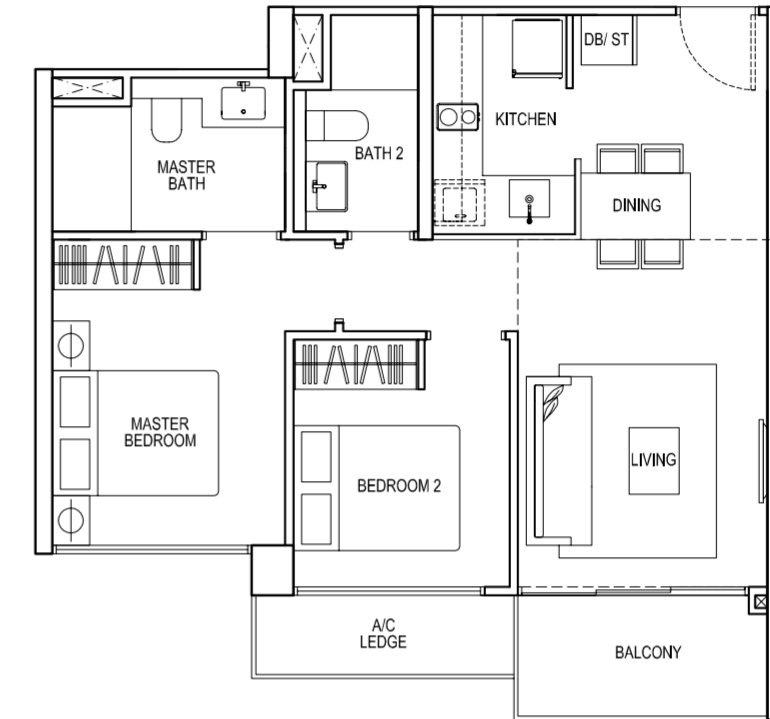
dotted line denotes void area for Type B1(a)

TYPE B2

2 Bedroom Deluxe
65sqm/700sqft
#02-24 to #21-24

TYPE B2(a)

2 Bedroom Deluxe
78sqm/840sqft
#22-24
Inclusive of void area
of 13 sqm above living

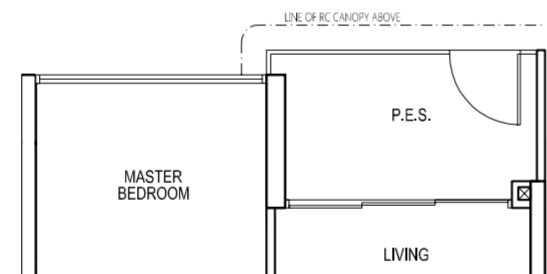


dotted line denotes void area for Type B2(a)

TYPE B1p

2 Bedroom
55sqm/592sqft
#01-18*

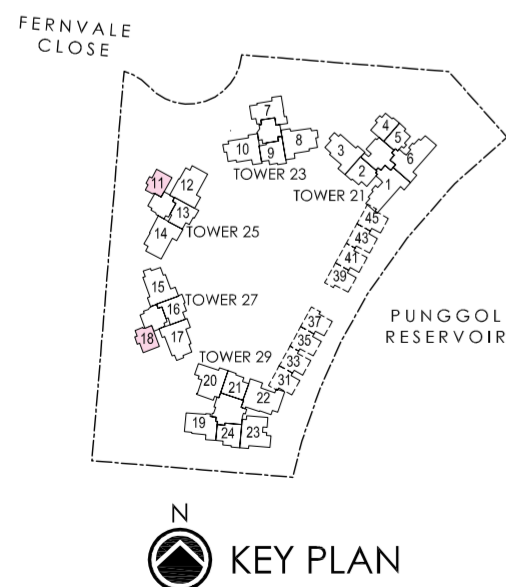
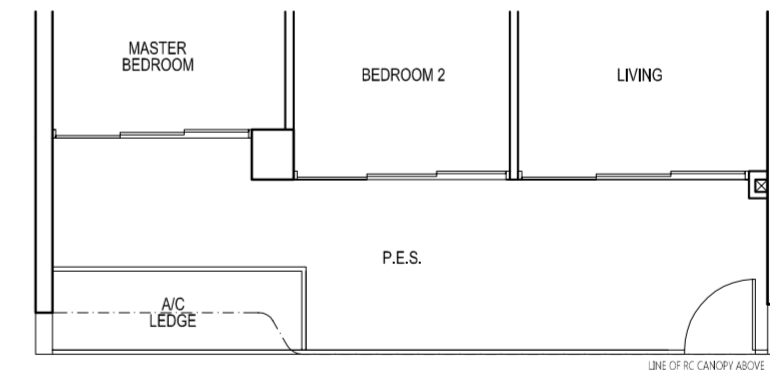
HIGH CEILING



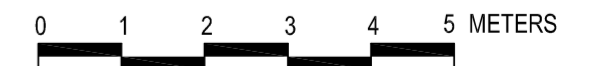
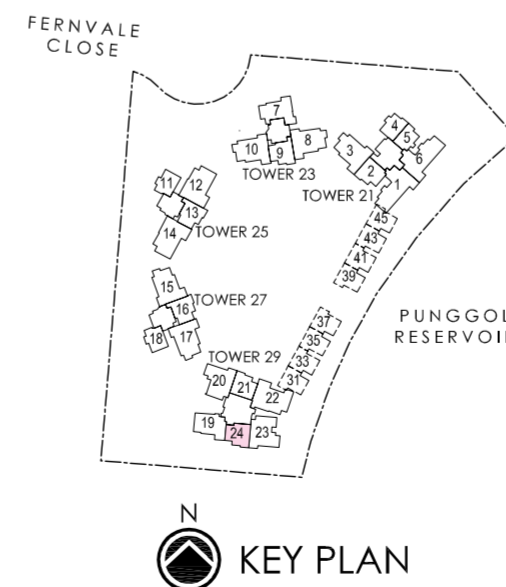
TYPE B2p

2 Bedroom Deluxe
77sqm/829sqft
#01-24

HIGH CEILING



*Mirror image



Area includes A/C ledge, balcony, PES and void area. Some units are mirror images of the apartment plans shown in the brochure. Please refer to the key plans for orientation. The plans are subjected to change as may be approved by relevant authorities. All floor plans are approximate measurements only and are subjected to government resurvey. Abbreviation: A/C ledge (Aircon Ledge), PES (Private Enclosed Space), ST (Store), DB (Distribution Board).

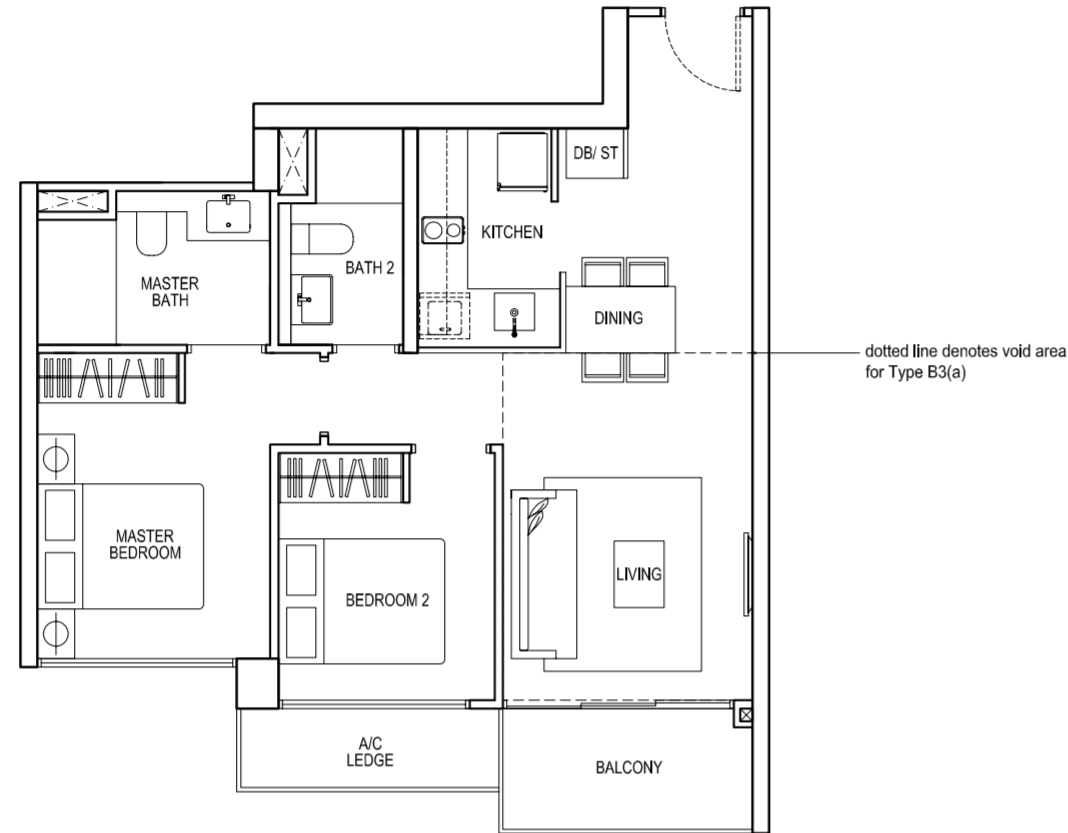
Area includes A/C ledge, balcony, PES and void area. Some units are mirror images of the apartment plans shown in the brochure. Please refer to the key plans for orientation. The plans are subjected to change as may be approved by relevant authorities. All floor plans are approximate measurements only and are subjected to government resurvey. Abbreviation: A/C ledge (Aircon Ledge), PES (Private Enclosed Space), ST (Store), DB (Distribution Board).

TYPE B3

2 Bedroom Deluxe
68sqm/732sqft
#03-09 to #19-09
#03-13 to #19-13
#03-16 to #19-16

TYPE B3(a)

2 Bedroom Deluxe
81sqm/872sqft
#20-09
#20-13
#20-16
Inclusive of void area
of 13 sqm above living

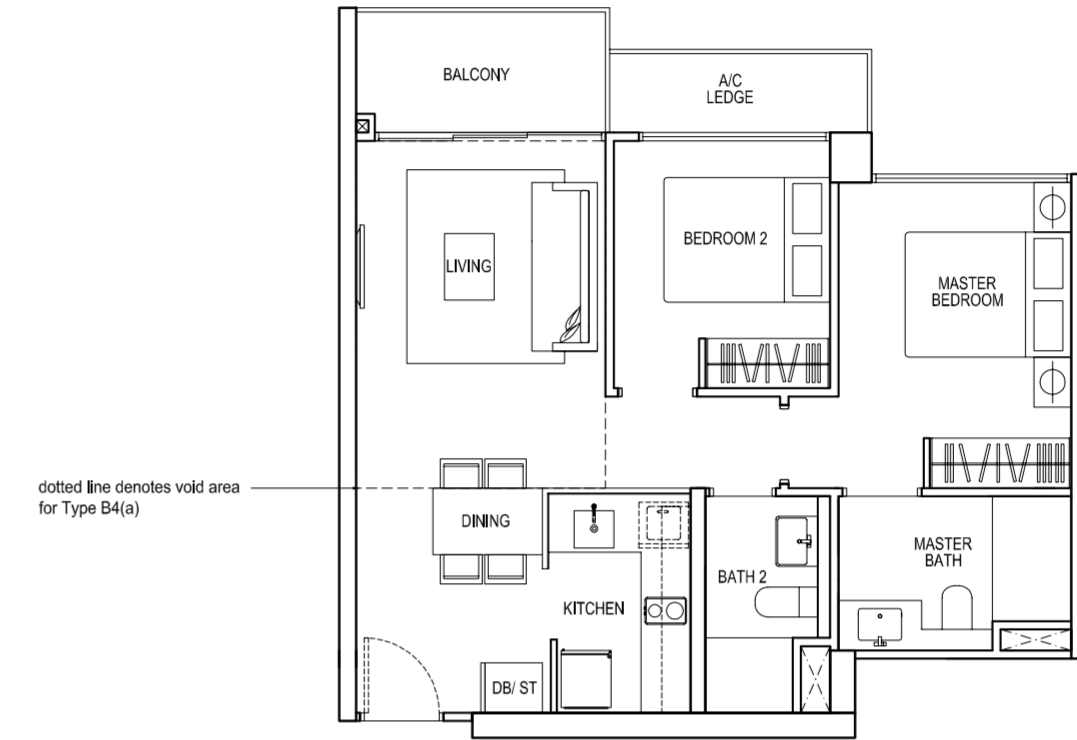


TYPE B4

2 Bedroom Deluxe
66sqm/710sqft
#03-21 to #21-21

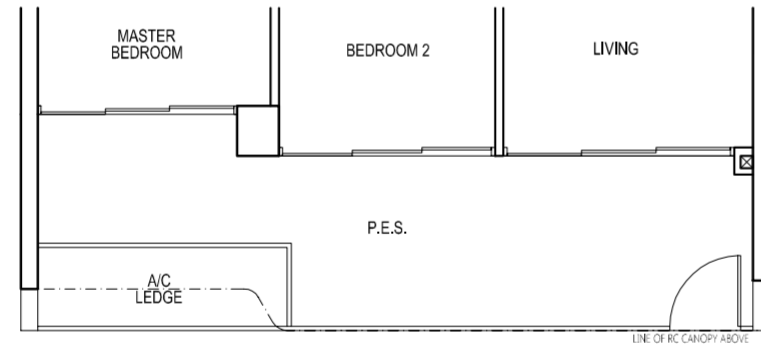
TYPE B4(a)

2 Bedroom Deluxe
79sqm/850sqft
#22-21
Inclusive of void area
of 13 sqm above living



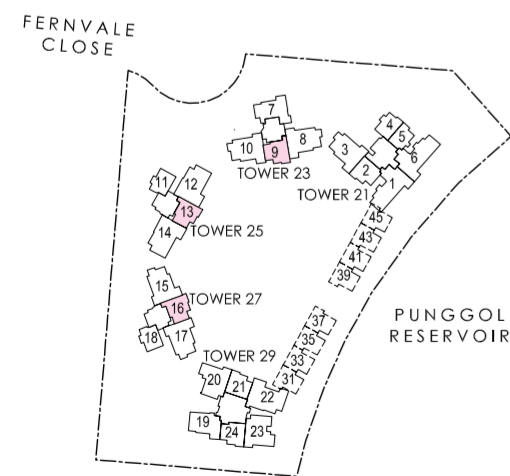
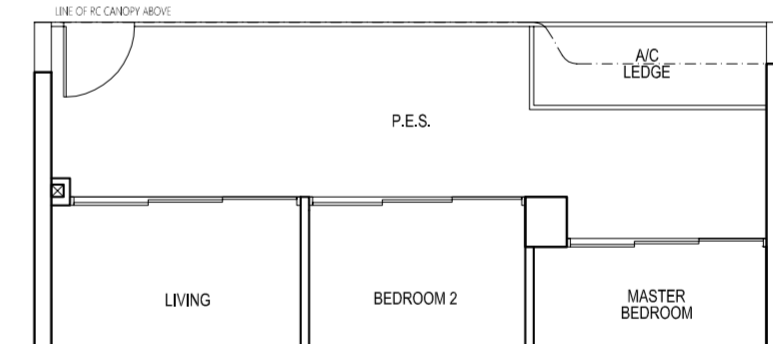
TYPE B3p

2 Bedroom Deluxe
80sqm/861sqft
#02-09
#02-13
#02-16

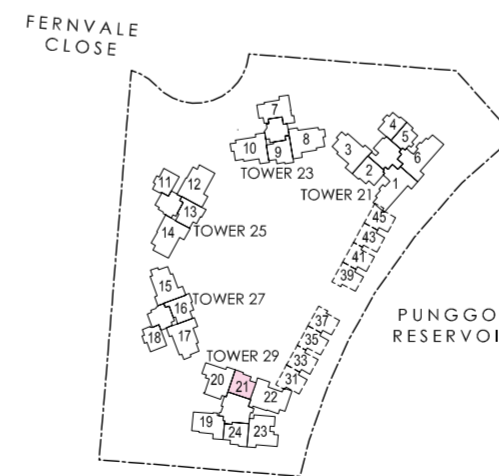


TYPE B4p

2 Bedroom Deluxe
78sqm/840sqft
#02-21



KEY PLAN



KEY PLAN



Area includes A/C ledge, balcony, PES and void area. Some units are mirror images of the apartment plans shown in the brochure. Please refer to the key plans for orientation. The plans are subjected to change as may be approved by relevant authorities. All floor plans are approximate measurements only and are subjected to government resurvey. Abbreviation: A/C ledge (Aircon Ledge), PES (Private Enclosed Space), ST (Store), DB (Distribution Board).

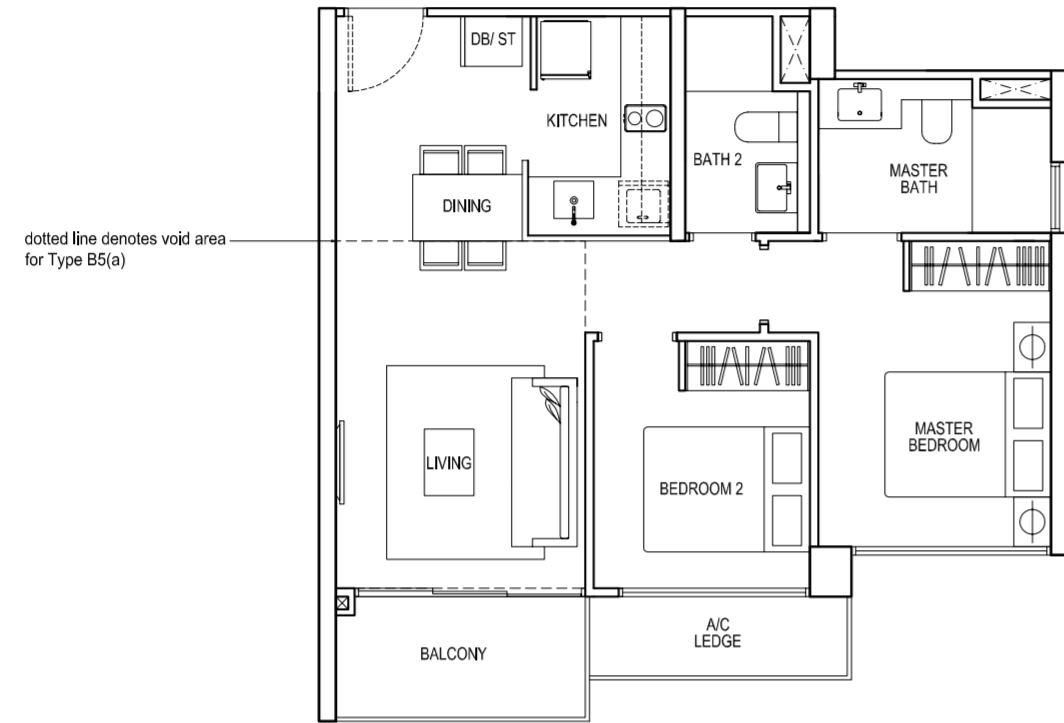
Area includes A/C ledge, balcony, PES and void area. Some units are mirror images of the apartment plans shown in the brochure. Please refer to the key plans for orientation. The plans are subjected to change as may be approved by relevant authorities. All floor plans are approximate measurements only and are subjected to government resurvey. Abbreviation: A/C ledge (Aircon Ledge), PES (Private Enclosed Space), ST (Store), DB (Distribution Board).

TYPE B5

2 Bedroom Deluxe
65sqm/700sqft
#03-02 to #21-02

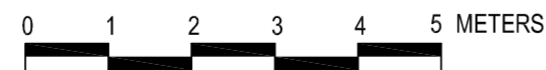
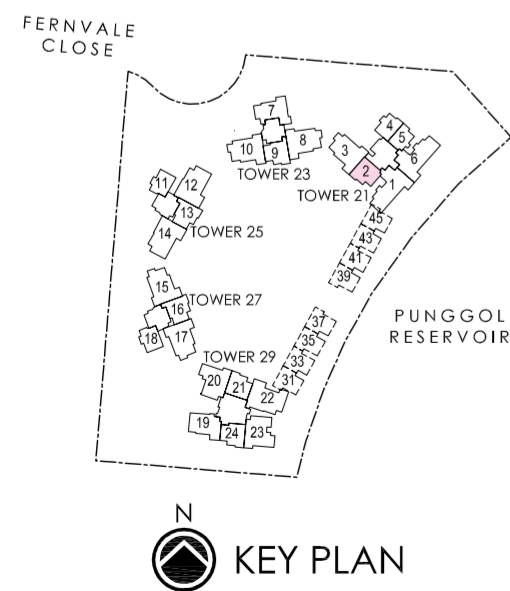
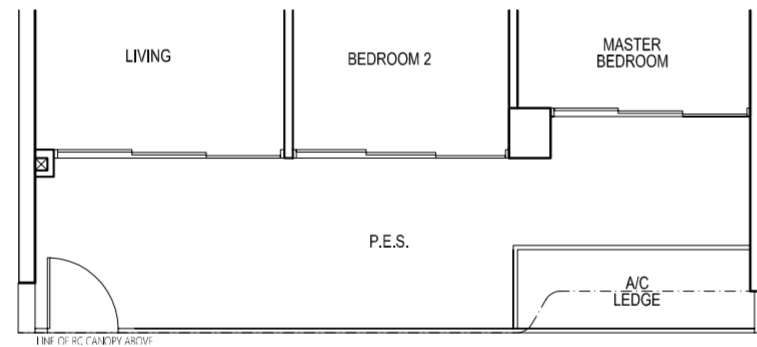
TYPE B5(a)

2 Bedroom Deluxe
78sqm/840sqft
#22-02
Inclusive of void area
of 13 sqm above living



TYPE B5p

2 Bedroom Deluxe
77sqm/829sqft
#02-02



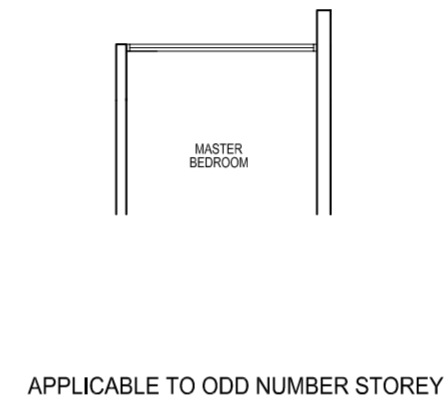
Area includes A/C ledge, balcony, PES and void area. Some units are mirror images of the apartment plans shown in the brochure. Please refer to the key plans for orientation. The plans are subjected to change as may be approved by relevant authorities. All floor plans are approximate measurements only and are subjected to government resurvey. Abbreviation: A/C ledge (Aircon Ledge), PES (Private Enclosed Space), ST (Store), DB (Distribution Board).

TYPE C

3 Bedroom
88sqm/947sqft
#02-07 to #19-07

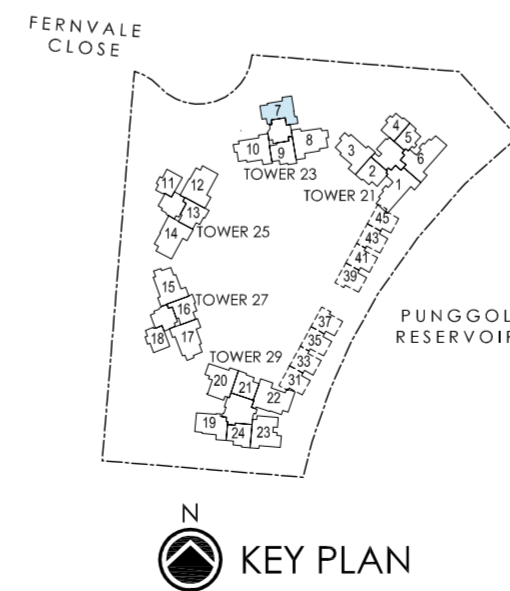
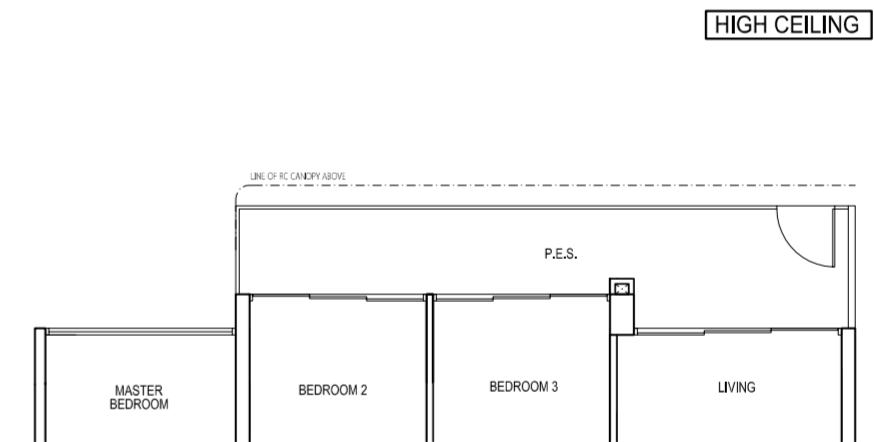
TYPE C(a)

3 Bedroom
101sqm/1087sqft
#20-07
Inclusive of void area
of 13 sqm above living



TYPE Cp

3 Bedroom
95sqm/1023sqft
#01-07



Area includes A/C ledge, balcony, PES and void area. Some units are mirror images of the apartment plans shown in the brochure. Please refer to the key plans for orientation. The plans are subjected to change as may be approved by relevant authorities. All floor plans are approximate measurements only and are subjected to government resurvey. Abbreviation: A/C ledge (Aircon Ledge), PES (Private Enclosed Space), ST (Store), DB (Distribution Board).

TYPE C1

3 Bedroom
88sqm/947sqft
#02-19 to #21-19

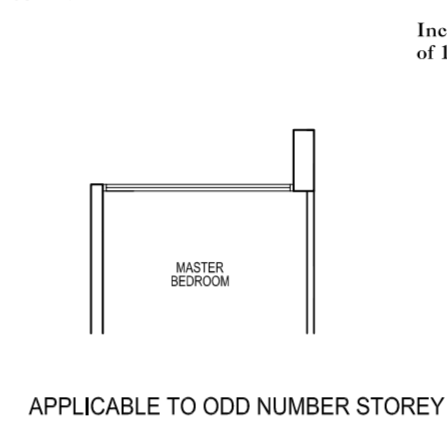
TYPE C1(a)

3 Bedroom
113sqm/1216sqft
#22-19
Inclusive of void area
of 25 sqm above living



TYPE C2

3 Bedroom Deluxe
104sqm/1119sqft
#03-03* to #21-03*
#03-08 to #19-08
#03-10* to #19-10*
#03-15 to #19-15
#03-17* to #19-17*



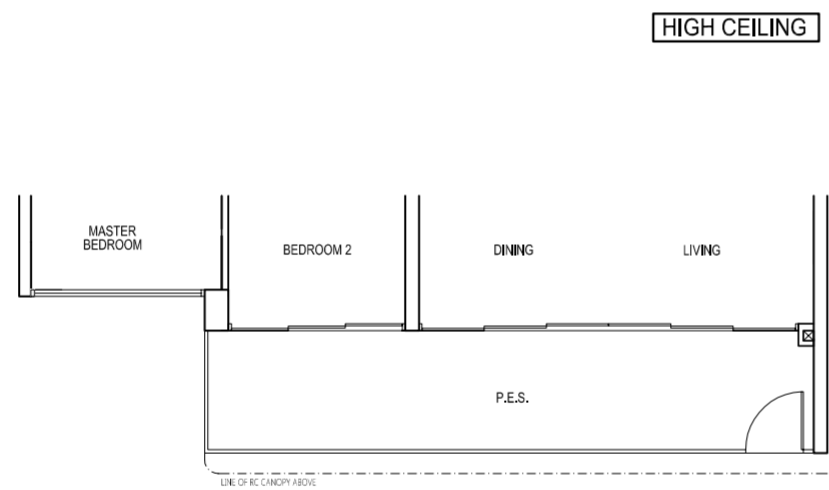
TYPE C2(a)

3 Bedroom Deluxe
118sqm/1270sqft
#22-03*
#20-08
#20-10*
#20-15
#20-17*
Inclusive of void area
of 14sqm above living



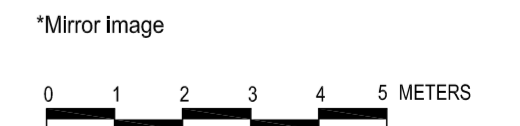
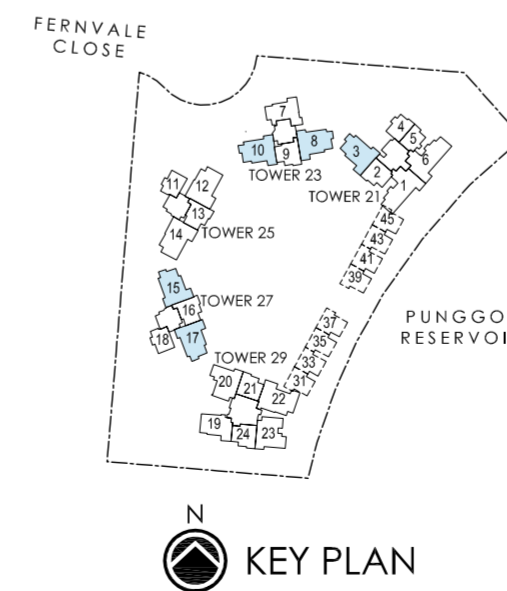
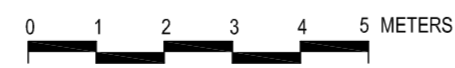
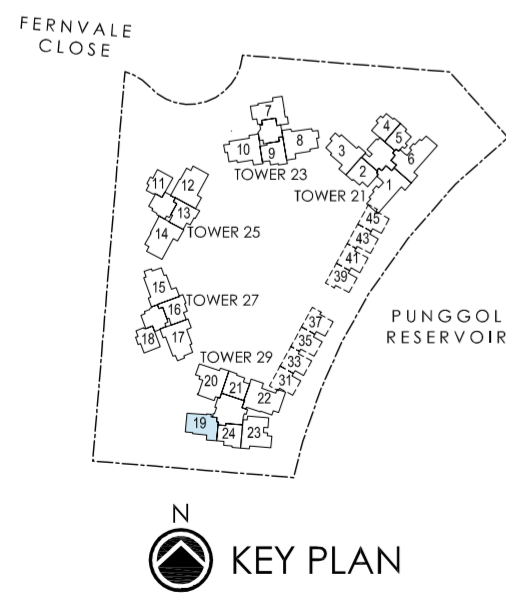
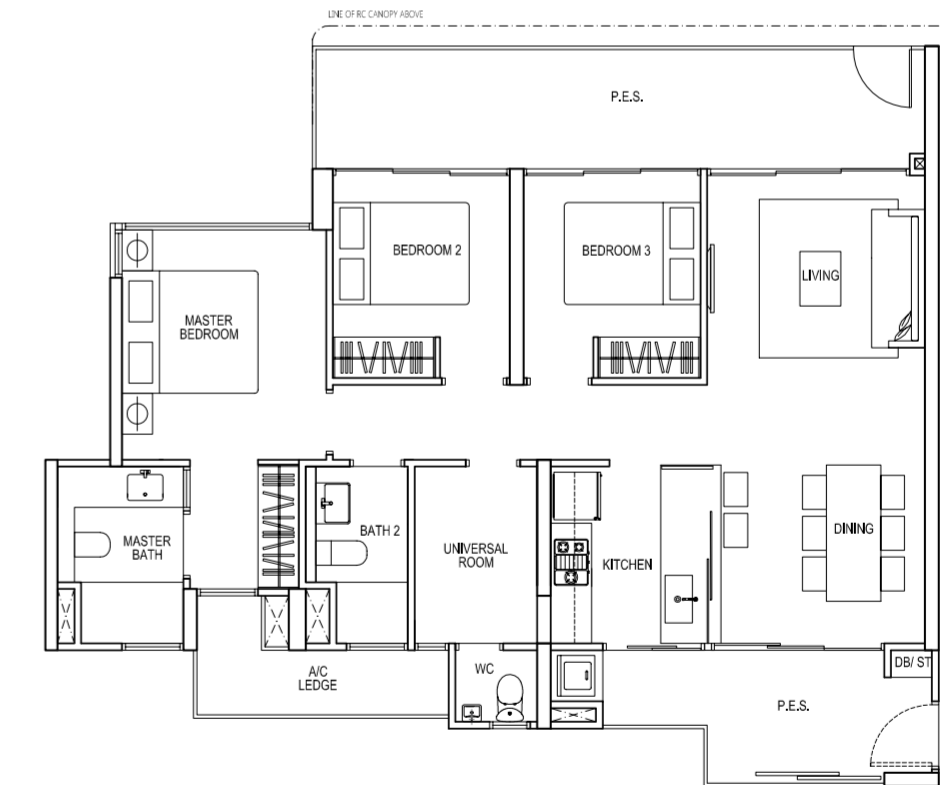
TYPE C1p

3 Bedroom
97sqm/1044sqft
#01-19



TYPE C2p

3 Bedroom Deluxe
114sqm/1227sqft
#02-03*
#02-08
#02-10*
#02-15
#02-17*



Area includes A/C ledge, balcony, PES and void area. Some units are mirror images of the apartment plans shown in the brochure. Please refer to the key plans for orientation. The plans are subjected to change as may be approved by relevant authorities. All floor plans are approximate measurements only and are subjected to government resurvey. Abbreviation: A/C ledge (Aircon Ledge), PES (Private Enclosed Space), ST (Store), DB (Distribution Board).

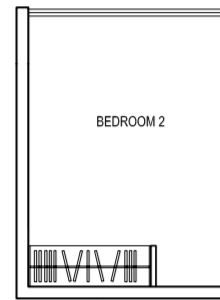
Area includes A/C ledge, balcony, PES and void area. Some units are mirror images of the apartment plans shown in the brochure. Please refer to the key plans for orientation. The plans are subjected to change as may be approved by relevant authorities. All floor plans are approximate measurements only and are subjected to government resurvey. Abbreviation: A/C ledge (Aircon Ledge), PES (Private Enclosed Space), ST (Store), DB (Distribution Board).

TYPE CTR

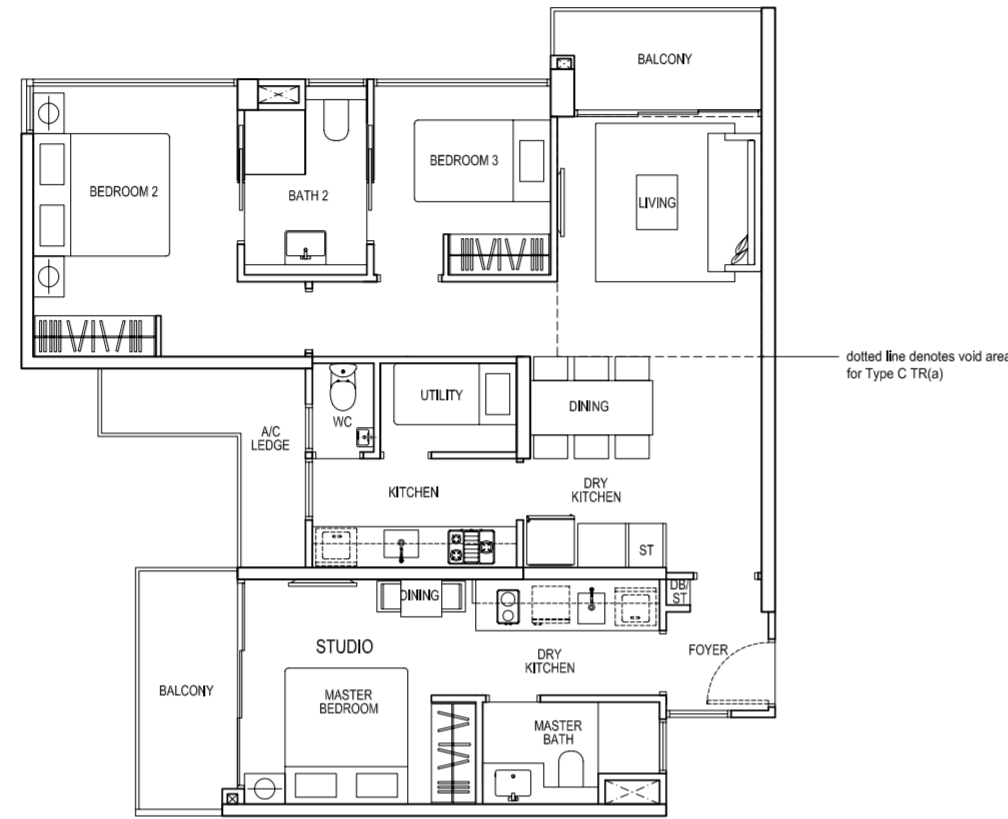
3 Bedroom
104sqm/1119sqft
#03-20 to #21-20
#02-23 to #21-23

TYPE CTR(a)

3 Bedroom
115sqm/1238sqft
#22-20
#22-23
Inclusive of void area
of 11 sqm above living



APPLICABLE TO ODD NUMBER STOREY

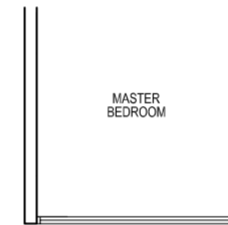


TYPE D

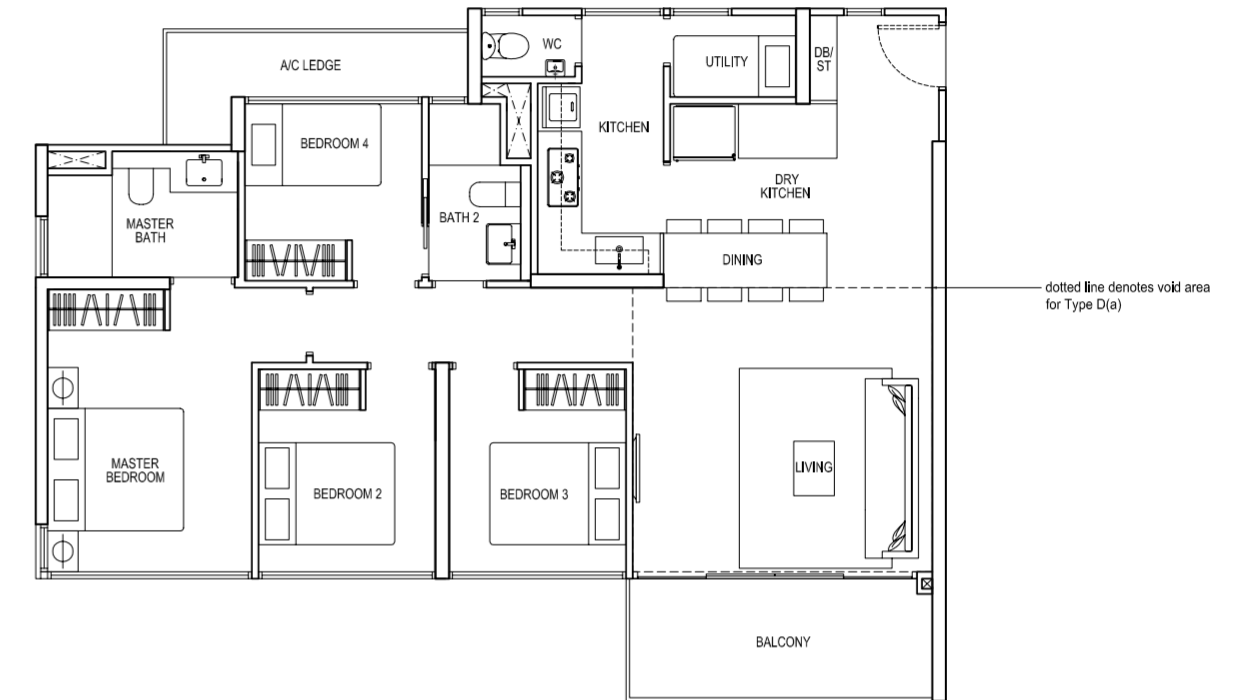
4 Bedroom
112sqm/1206sqft
#03-12* to #19-12*
#03-14 to #19-14

TYPE D(a)

4 Bedroom
131sqm/1410sqft
#20-12*
#20-14
Inclusive of void area
of 19 sqm above living



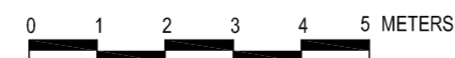
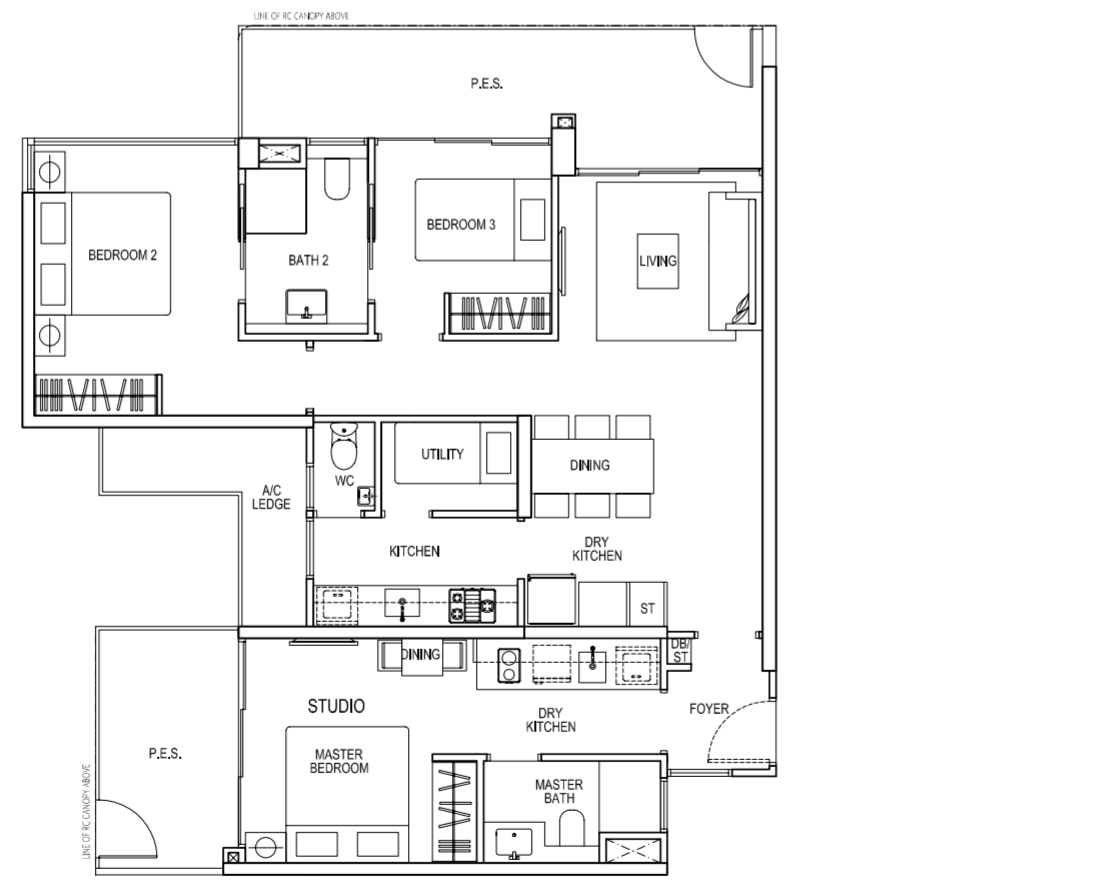
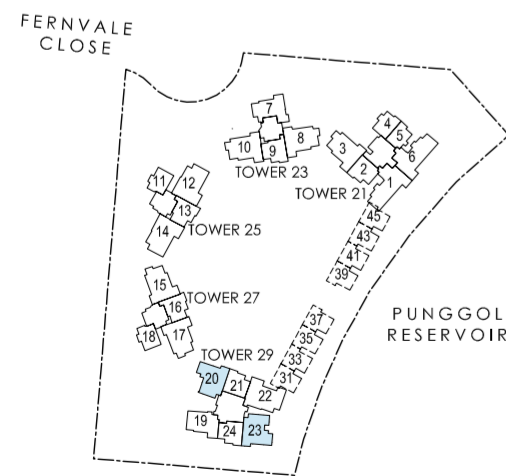
APPLICABLE TO ODD NUMBER STOREY



TYPE CTRp

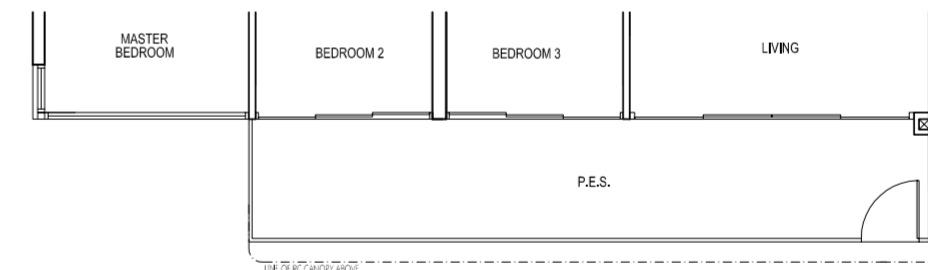
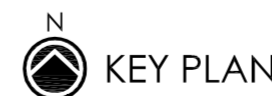
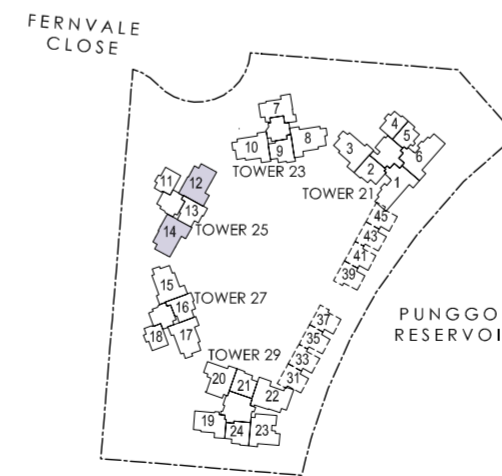
3 Bedroom
116sqm/1249sqft
#02-20
#01-23

HIGH CEILING



TYPE Dp

4 Bedroom
122sqm/1313sqft
#02-12*
#02-14



*Mirror image



Area includes A/C ledge, balcony, PES and void area. Some units are mirror images of the apartment plans shown in the brochure. Please refer to the key plans for orientation. The plans are subjected to change as may be approved by relevant authorities. All floor plans are approximate measurements only and are subjected to government resurvey. Abbreviation: A/C ledge (Aircon Ledge), PES (Private Enclosed Space), ST (Store), DB (Distribution Board).

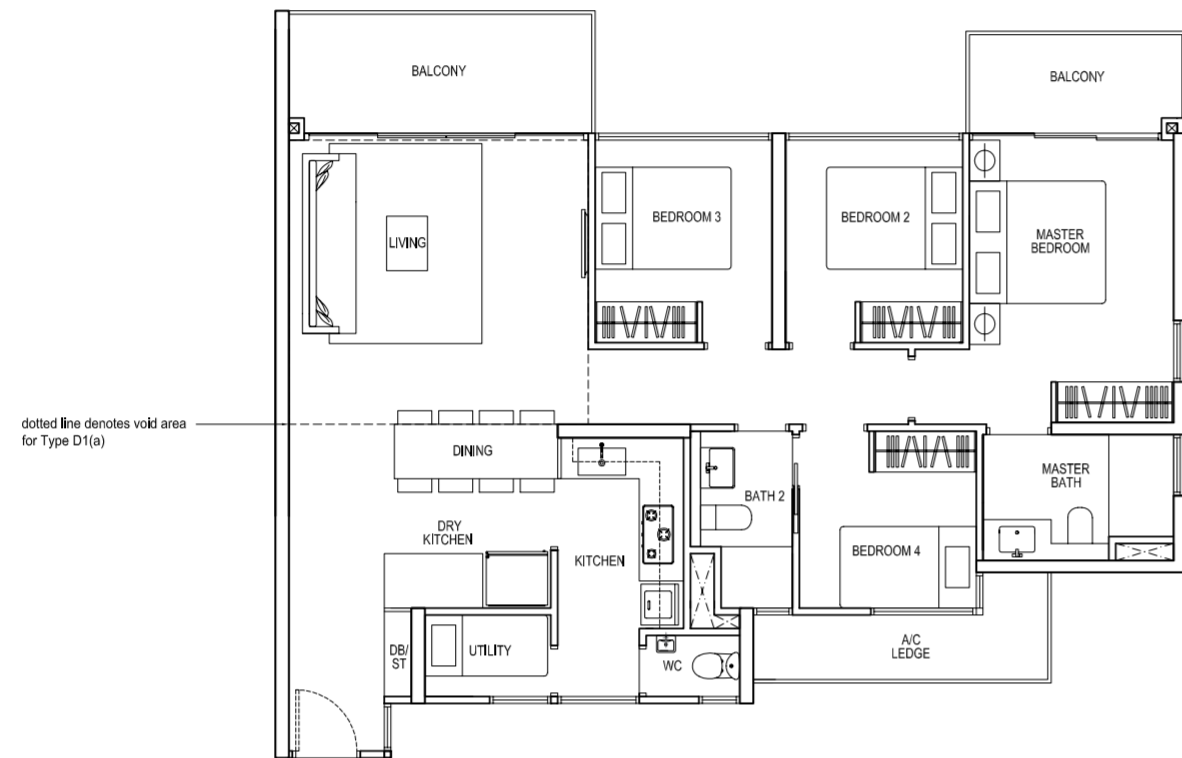
Area includes A/C ledge, balcony, PES and void area. Some units are mirror images of the apartment plans shown in the brochure. Please refer to the key plans for orientation. The plans are subjected to change as may be approved by relevant authorities. All floor plans are approximate measurements only and are subjected to government resurvey. Abbreviation: A/C ledge (Aircon Ledge), PES (Private Enclosed Space), ST (Store), DB (Distribution Board).

TYPE D1

4 Bedroom
118sqm/1270sqft
#03-22 to #21-22

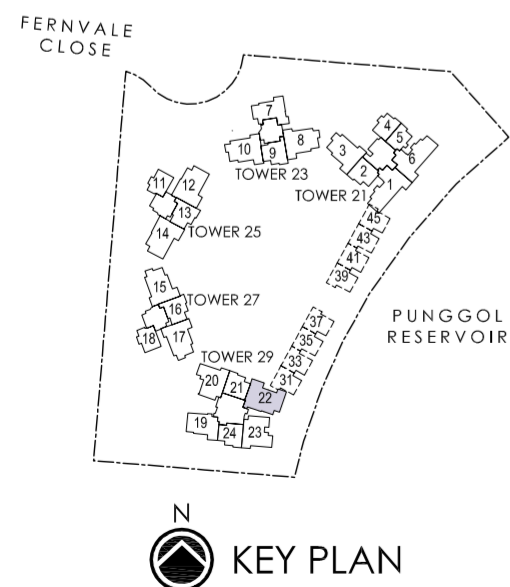
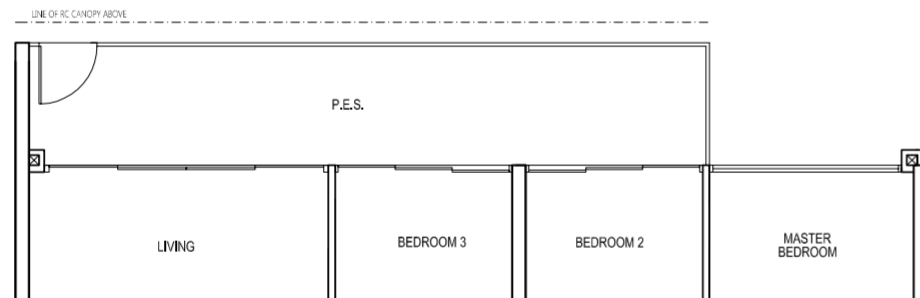
TYPE D1(a)

4 Bedroom
137sqm/1475sqft
#22-22
Inclusive of void area
of 19 sqm above living



TYPE D1p

4 Bedroom
123sqm/1324sqft
#02-22

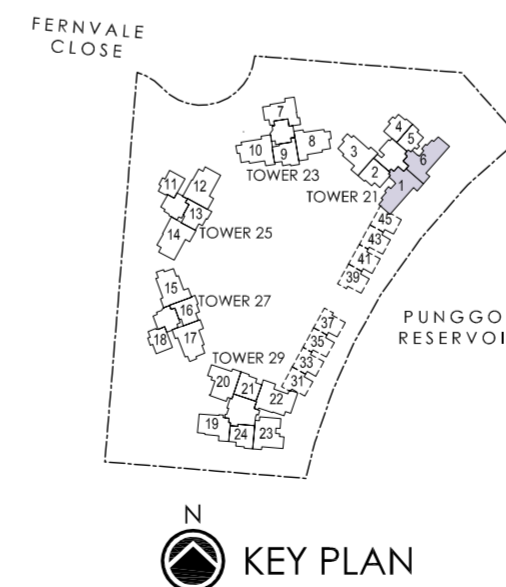


TYPE D2

4 Bedroom
126sqm/1356sqft
#03-01* to #21-01*
#02-06 to #21-06

TYPE D2(a)

4 Bedroom
148sqm/1593sqft
#22-01*
#22-06
Inclusive of void area
of 22 sqm above living



*Mirror image



Area includes A/C ledge, balcony, PES and void area. Some units are mirror images of the apartment plans shown in the brochure. Please refer to the key plans for orientation. The plans are subjected to change as may be approved by relevant authorities. All floor plans are approximate measurements only and are subjected to government resurvey. Abbreviation: A/C ledge (Aircon Ledge), PES (Private Enclosed Space), ST (Store), DB (Distribution Board).

Area includes A/C ledge, balcony, PES and void area. Some units are mirror images of the apartment plans shown in the brochure. Please refer to the key plans for orientation. The plans are subjected to change as may be approved by relevant authorities. All floor plans are approximate measurements only and are subjected to government resurvey. Abbreviation: A/C ledge (Aircon Ledge), PES (Private Enclosed Space), ST (Store), DB (Distribution Board).

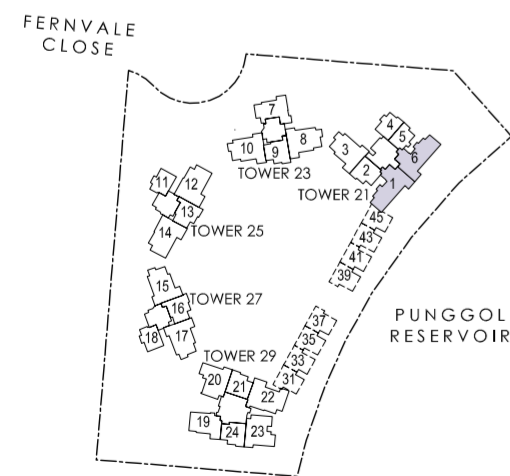
TYPE D2p

4 Bedroom
139sqm/1496sqft
#02-01



TYPE D2p1

4 Bedroom
148sqm/1593sqft
#01-06



Area includes A/C ledge, balcony, PES and void area. Some units are mirror images of the apartment plans shown in the brochure. Please refer to the key plans for orientation. The plans are subjected to change as may be approved by relevant authorities. All floor plans are approximate measurements only and are subjected to government resurvey. Abbreviation: A/C ledge (Aircon Ledge), PES (Private Enclosed Space), ST (Store), DB (Distribution Board).

JOINTLY DEVELOPED BY:



ABOUT FRASERS CENTREPOINT LIMITED

Frasers Centrepoint Limited ("FCL") is a full-fledged international real estate company and one of Singapore's top property companies with total assets of approximately S\$10.5 billion as at 30 September 2013. FCL has three core businesses focused on residential, commercial and hospitality properties spanning over 30 cities across Asia, Australasia, Europe, and the Middle-East.

FCL is listed on the Main Board of the SGX-ST. The Company is also the sponsor of two real estate investment trusts listed on the Main Board of the Singapore Exchange Securities Trading Limited ("SGX-ST"), Frasers Centrepoint Trust and Frasers Commercial Trust, which are focused on retail, and office and business space properties, respectively.



As a testament to its excellent service standards, best practices, and support of the environment, FCL is the proud recipient of numerous awards and accolades both locally and abroad.

For more information on FCL, please visit www.fraserscentrepoint.com or call 6273 2122.



ABOUT SEKISUI HOUSE LIMITED

Sekisui House Limited, founded in 1960, is Japan's leading housing company listed on three Japanese stock exchanges with ¥1,614 billion (S\$20.3 billion) sales and ¥1,539 billion (S\$19.4 billion) worth of assets in 2012 with cumulative sales of 2.1 million residential units to day. Aiming to create comfortable and thoughtful living spaces with the focus on environmental sustainability, it has introduced zero emission homes and carbon neutral homes "Green First Model" with the capacity to reduce up to 100% of carbon footprint. Apart from Japan, Sekisui House is in Australia, China, Singapore and USA.



ABOUT FAR EAST ORGANIZATION
Inspiring better lives

Far East Orchard Limited is a member of Far East Organization, Singapore's largest private property developer established in 1960. A well-recognised developer, Far East Orchard has delivered a number of successful residential, commercial and hospitality developments. Today, it has a diversified portfolio focusing on property development, hospitality real estate development and management, and healthcare real estate space.

In Singapore, the Company currently has three projects under development - euHabitat, SBF Center and RiverTrees Residences. Far East Orchard is also redeveloping its commercial building in Kuala Lumpur, Malaysia into a hospitality property.

As a vertically integrated regional hospitality owner and operator with a sizeable overseas network, Far East Orchard, through its hospitality management arm, Far East Hospitality, has a global footprint spanning Australia, China, Denmark, Germany, Hungary, Malaysia, New Zealand and Singapore. The Company's hospitality portfolio covers more than 80 properties with more than 13,000 rooms across eight countries.

Far East Orchard also owns a portfolio of purpose-built medical suites in Novena Medical Center and Novena Specialist Center, which are located in Singapore's premier Novena medical hub. It intends to be the premier private owner, operator and landlord of healthcare space in Singapore.

For enquiries, please call
6636 9019
or visit www.rivertrees.sg

JOINTLY DEVELOPED BY:



• Developer: Watervine Homes Pte Ltd (Company Registration No.: 201320664W) • Developer's Licence No.: C1121 • Lot No. 4789X MK 20 • Tenure: Leasehold of 99 years w.e.f. 28 August 2013
• Building Plan No.: A0781-00016-2013-BP01 (Dated: 16 January 2014) • Expected Date of T.O.P.: 13 June 2018 • Expected Date of Legal Completion.: 13 June 2021

While every reasonable care has been taken in preparing this brochure, neither the Developer nor its agents will be held responsible for any inaccuracies or omissions. All statements are believed to be correct but are not to be regarded as statements or representation of facts. All information and specifications are current at the time of going to press and are subject to such changes as may be required by the developer. All plans are not to scale unless expressly stated and are subject to any amendments which are required or approved by the relevant authorities. Renderings and illustrations are artist's impressions only and photographs are only decor suggestions and cannot be regarded as representations of fact. All areas and other measurements are approximate only and subject to final survey. The Sale and Purchase Agreement embodies all the terms and conditions between the developer and the purchaser and supersedes and cancels in all respects all previous representations, warranties, promises, inducements or statements of intention, whether written or oral made by the developer and/or the developer's agent which are not embodied in the Sale and Purchase Agreement.

rivertreas
RESIDENCES